

Winter Theme

Syllable Division Sorting Practice

I hope you enjoy this resource!

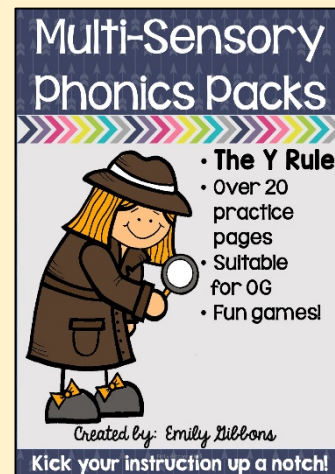
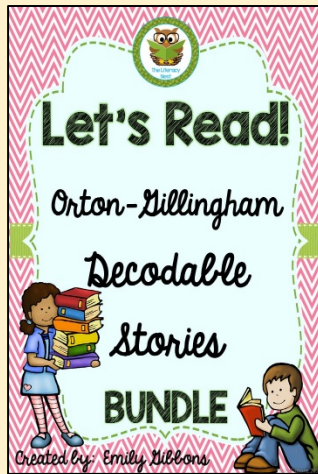
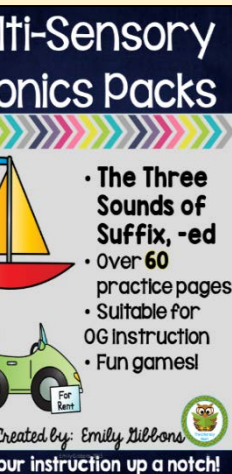
Here are a few ways to stay in touch with me!

- Follow [my store](#).
- Sign up for my monthly email newsletter on [my blog](#). I'll send you important updates and a fun freebie!



You may also like the following resources in my store:

Just click on any of the images below.



[Click here for more Orton-Gillingham resources.](#)

**Teaching Tips: This is a review game for beginning syllable division.
It does not address the accents on the syllables.**

Here are some tips.

Teacher led:

1. Display the syllable division posters (pages 4-7) and review the examples.
2. Display the four mugs (page 9) in a pocket chart.
3. Show each word card and sort the words into the correct categories together.
4. Practice dividing the words together.

Student led:

1. Print out and laminate the syllabication mats and four syllabication mugs.
(pages 9-13)
2. Give pairs of students a bag of cut apart word cards. (page 8)
3. Students take turns picking a card from the bag.
4. Spell and write the word correctly on the correct syllabication mat, place the word card on the correct mug, and divide the word into syllables.
5. Repeat until all word cards are used.

Additional Practice: Students sort and write word cards and record their answers on the recording sheet. (page 14) An answer key is on page 15.

Emily Gibbons, www.theliteracynest.com

VCCV

Two Consonants Between Two Vowels

*Most of the time,
divide between the two
middle consonants.
(rabbit rab/bit)

VCV

One Consonant Between Two Vowels

* Divide before the consonant.

(unit u/nit)

Or...

* Divide after the consonant.

(river riv/er)

VCCCV

Three Consonants Between Two Vowels

* Divide after the first
consonant.

(pilgrim pil/grim)

Or...

* Divide after the second
consonant or first consonant
blend. (partner part/ner)

VV

Two Adjacent Vowels

- * The two middle vowels may or may not form a vowel team.
- * Divide between the two middle vowels. (dial di/al)

Syllable Division Game Cards

napkin

until

rabbit

upset

robot

open

robin

cabin

monster

pumpkin

hundred

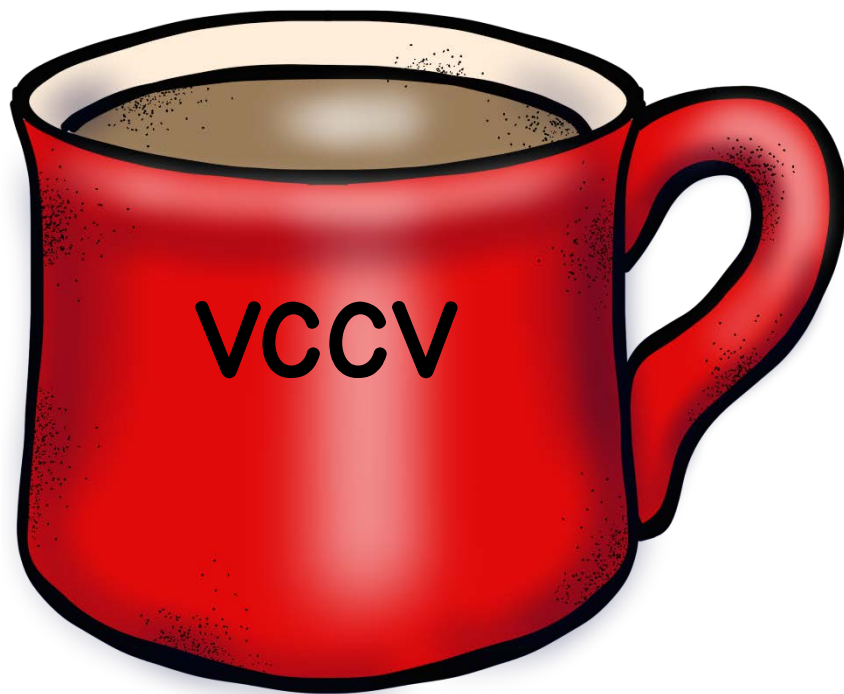
complete

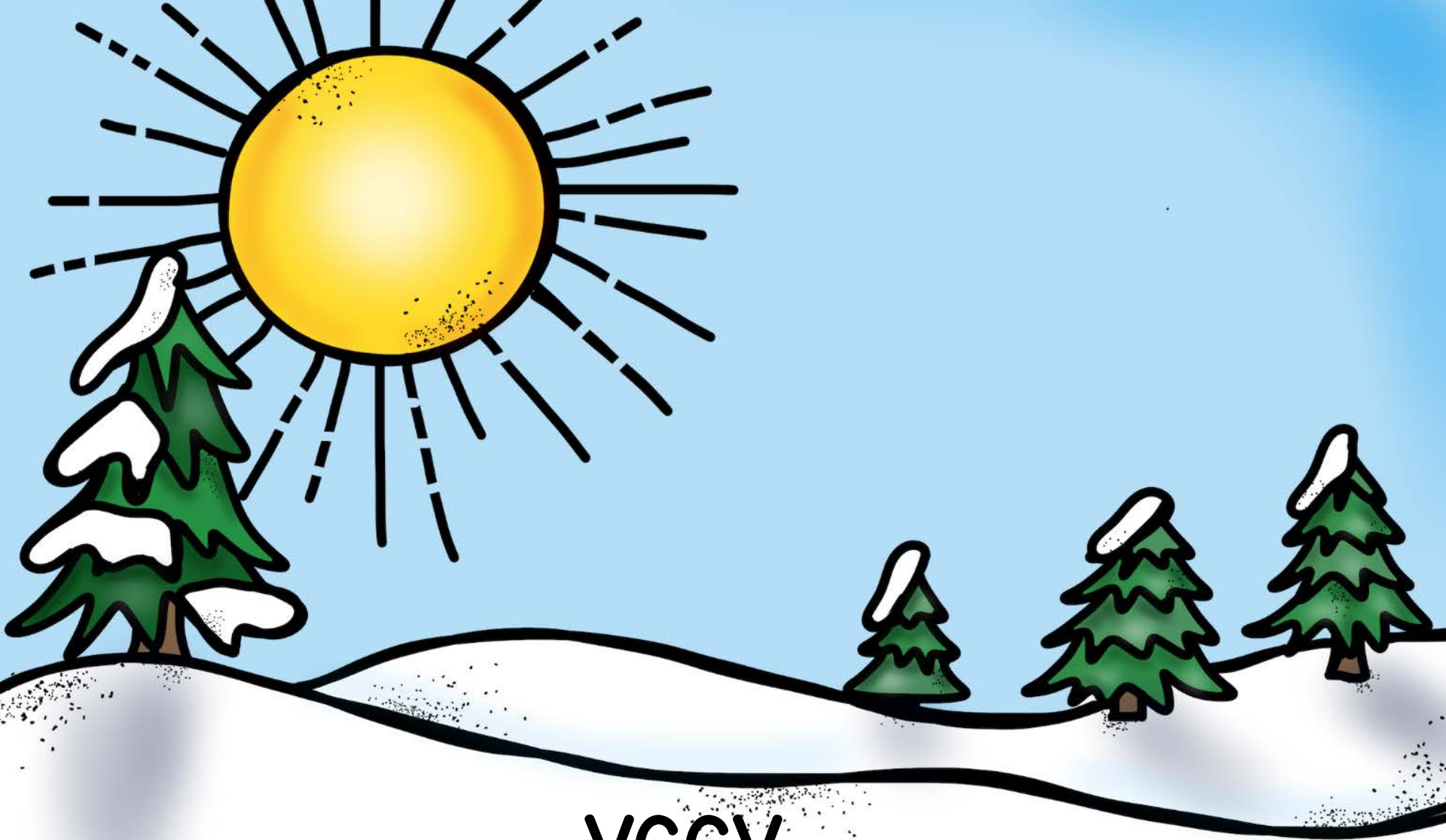
poem

quiet

create

lion





VCCV





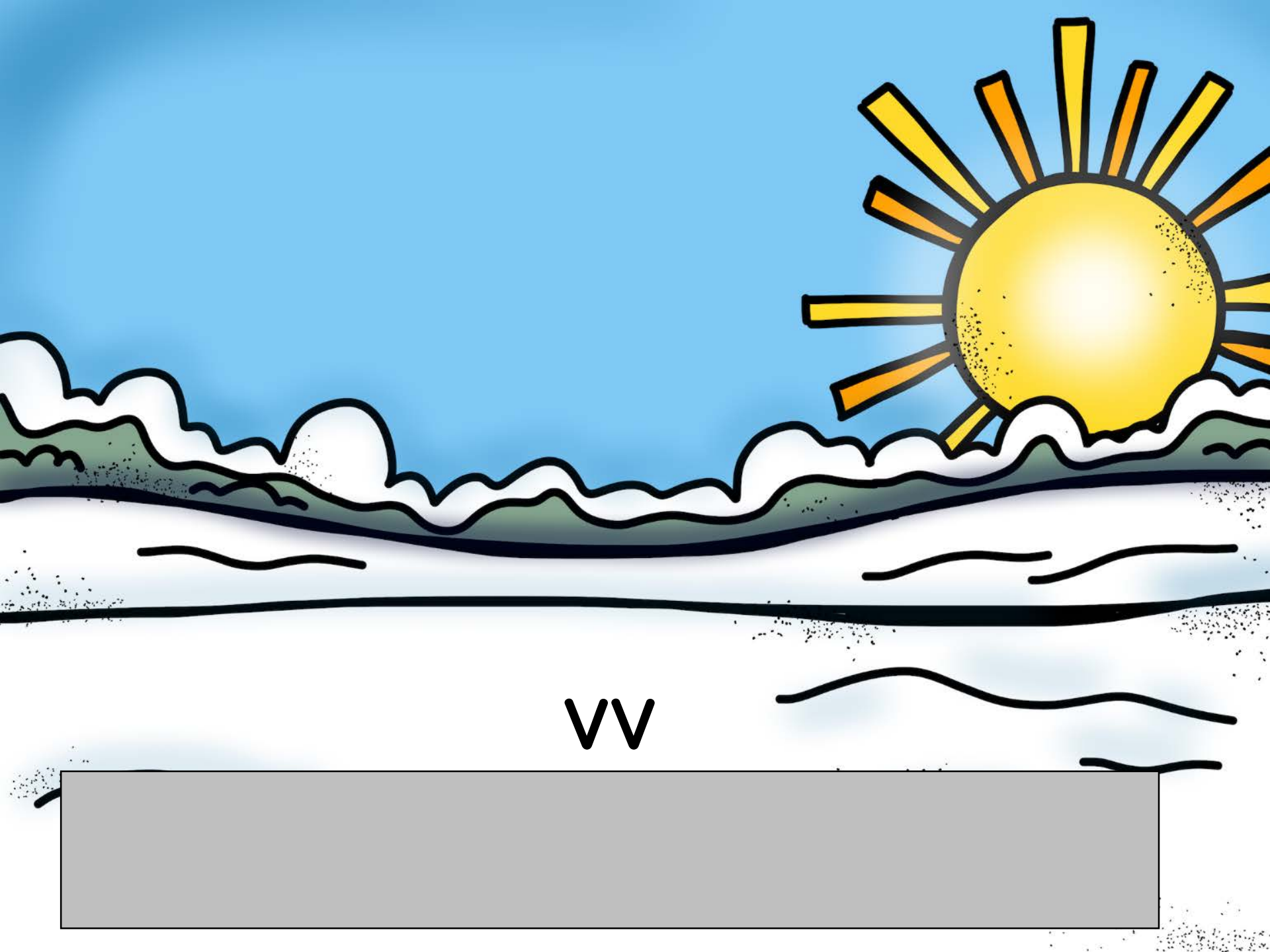
VCV

A large, empty rectangular box with a light gray background and a thin black border, positioned at the bottom of the page.



VCCCV





VV

Name: _____

Date: _____

Syllable Division Word Sort

Directions: 1. Read and sort your word cards. 2. Write each word in the correct category. 3. Divide each word into syllables.

V C C V	V C V	V C C C V	V V

Name: ANSWER KEY

Date: _____

Syllable Division Word Sort

Directions: 1. Read and sort your word cards. 2. Write each word in the correct category.

V C C V	V C V	V C C C V	V V
nap/kin	ro/bot	mon/ster	po/em
un/til	o/pen	pump/kin	qui/et
rab/bit	rob/in	hun/dred	cre/ate
up/set	cab/in	com/plete	li/on

Credits: My products are made possible by the following fabulous artists!



This product and all of its contents is for educational purposes only, and is not for resale or redistribution in any form. It was purchased and/or downloaded for a single user, therefore may not be distributed without purchasing an additional user license available in my store. Please contact me, the seller for additional license information.

Emily Gibbons, © 2015

<https://www.teacherspayteachers.com/Store/Emily-Gibbons-The-Literacy-Nest>

